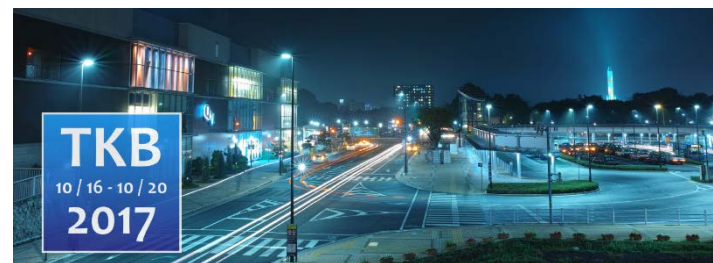




HEPiX Fall 2017 + LHCPN-LHCONE meeting co-located with HPSS User Forum 2017

Takashi Sasaki
Computing Research Center
KEK

HEPiX





HEPIX Fall 2017



- The first HEPiX meeting in Japan
- Dates
 - October 16-20, 2017
- Venue
 - KEK **Tsukuba** campus
- Registration will begin shortly
 - <http://hepixon-fall-2017.kek.jp/>
- Co-located with HPSS User Forum 2017
 - <http://www.hpss-collaboration.org/>
 - Share the logistics
 - Only the beginning session is to be held jointly
 - Reception will be done jointly, but separate banquets




LHCOPN-LHCONE meeting 2017



- Also co-located with HEPiX
- Participants are requested to register on HEPiX even if they join a part of the week
 - No reduction fee
- The details will be decided later
 - Tuesday and Wednesday ?
 - Another meeting is reserved in KEK



Who are we?

- KEK stands for
 - K: 高: Kou : High 
 - E: エネルギー: Enerugi : Energie(German) : Energy
 - K: 加速器研究機構: Kasokuki Kennkyuu kikou : Accelerator Research Organization
- KEK is an Inter-University Research Corporation
 - 100% Government funded (MEXT) “agency”
 - 750 permanent employee including administration people
 - 1100 in total including the limited term and part time employee
 - We are not government employees anymore, but the same regulations are applied
- Research in multi-disciplines
 - HEP, Nuclear Phys., Material science, Life science and etc.
 - More than 100 foreign researchers are staying at KEK always
- Search “3050801 Japan” on [google map](#)



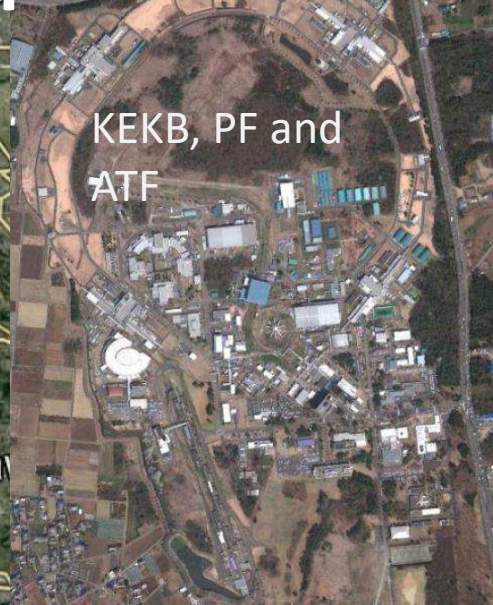
KEK Computing Research Center

- Missions on deployment, operation, research and development: all of the works related ICT
- Only 25 staff positions including secretaries
 - Faculty system as well as other divisions of KEK
 - Professor, Associate Professor..... : Computing center duties and research
 - Engineers and admin assistants
- Procurement model
 - Purchase services not just hardware for 4 years
 - Operations are done by the contracted companies mostly
 - The procurement procedure takes 18 month at least
 - The next procurements
 - Central computer system in 2020
 - internal network infrastructure in 2018
- Help desk is also outsourced to the company



KEK has two campuses

Electron machines in Tsukuba
and proton machines in Tokai



Mount
Tsukuba
筑波山
★
Tsukuba
HEPiX
Tsukuba

Tokai



Narita

Haneda



KEK Tsukuba

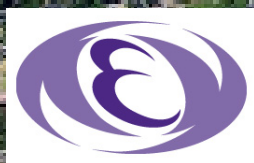


KEK is the best place for a serious meeting such as HEPiX. We could use a conference center in the city center instead.

Mt. Tsukuba

1km

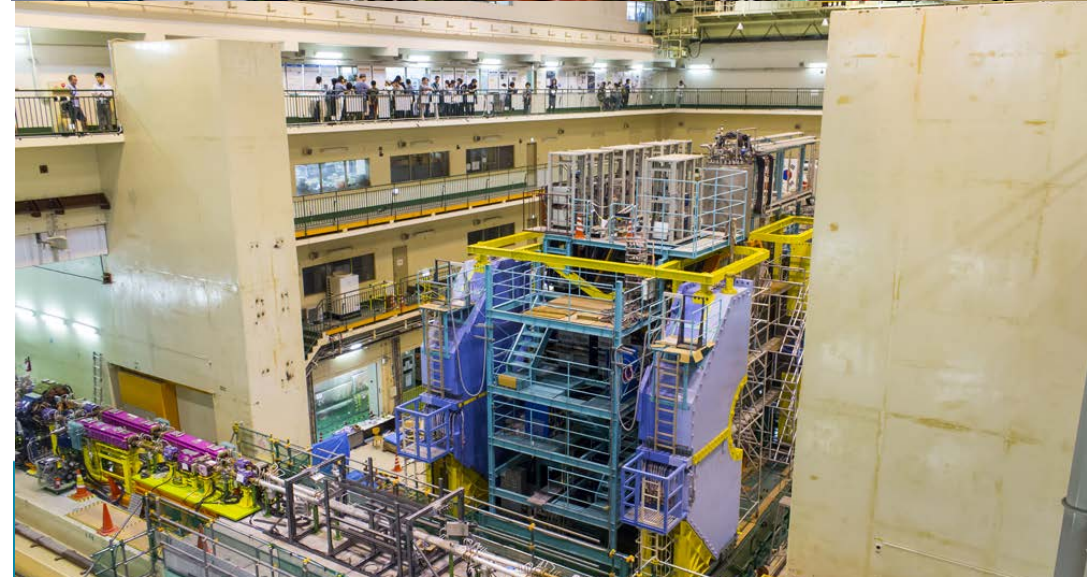
10km from the city center
(30min bus ride)
2km to the closest shops
and restaurants



KEK, High Energy Accelerator
Research Organization



KEK Tsukuba



大学共同利用機関法人
高エネルギー加速器研究機構
HIGH ENERGY ACCELERATOR RESEARCH ORGANIZATION



Tsukuba, the city of history and science



- Tsukuba area was well developed since 1500 years ago
 - Capitol of the local government in 7th century
- Mt. Tsukuba(877m), the mountain of love
 - The twin peaks symbolize the couple of Gods
 - Wedding ceremony at the shrine is popular
 - “Utagaki” was held once a year at the shrine in ancient
 - People exchange short love songs/poems randomly to find their partners in competitive behavior
 - “Like the Minano River surging from the peak of Mt. Tsukuba, my love cascades to make deep pools below the falls. ” (Retired Emperor Yozei, 9-10C) translated by Peter McMillan, one of the best 100 short songs chosen in 12C





Tsukuba Science City



- The artificially designed/built city for national universities(2), a private university and national research institutions (32) including JAXA, KEK etc.
 - Private companies also have their laboratories
 - Construction started in 1968 and ended in 1985
 - 210K+ population in City of Tsukuba
 - 20K+ students
 - 36K+ employees in the universities and institutions
 - 8K+ PhDs
 - 5K visiting foreign researchers a year(more than 2 weeks stay)
- Rapid train service between Akihabara(Tokyo) and Tsukuba since 2005
 - 45 min by the fastest service



つくば駅前

Copyright(c) 2008 SHIUKI Hiroshi



Safety information



- Criminal rates are lower in all over Japan
 - Possession of guns is not allowed
 - Civilian possessions: 0.6 firearms per 100 people in Japan while 101.5 in US, 30.3 in Germany, 31.2 in France and 6.7 in UK
- Natural disasters
 - Chance on feeling smaller scale earthquakes up to scale 3 during your stay
 - The maximum expected scale in Tsukuba is 6- in [Japanese seismic intensity scale](#)
 - Modern buildings are designed as earthquake tolerant
 - October is the end of typhoon season. Still there is a small chance.
- Foods
 - All of the foods from Fukushima are screened
 - Only ND (Not Detected) foods are sold (less than 10 Bq/Kg)
 - No banana (~100 Bq/Kg) is produced in this region
 - Many of restaurants are not yet aware well the necessity on paying more attention to food allergies
 - People who have the allergy on wheats must pay more attention
 - Basic seasonings such as “shoyu” and “miso” often made from wheats(not always)
 - There are a few [restaurants](#) that offer menu for vegetarian or Halal menu in Tsukuba



Travel tips in Japan



- No tip! : There is no tipping custom
 - Service fees are always included in your bill at restaurants, hotels and everywhere even if not noted
- Pay at cashers at restaurants and café otherwise requested
- The last order at restaurants tend to be much earlier than Europe
- Not be scared of [robotic toilets](#) not only [Gundom](#)!
- People learn English in schools, but not so fluent
 - Write down or show your phone/tablet screen
 - Education emphasis on reading and writing than conversation
 - Google translate may help you if you are lucky enough
- Still cash oriented and needs cash
 - Even chain stores and super markets with the VISA or Master signs often refuse to take foreign issued credit cards
 - The shops with the UnionPay sign are likely to take foreign issued VISA and Master also
 - Only 2 ATMs accept foreign credit cards around the Tsukuba station
 - Tsukuba Post Office and Benimaru store
 - All of Post Offices and Seven Eleven stores in Japan have ATMs that accept foreign cards





Laptops and mobile phones

- AC outlet
 - Type A
 - The same with North America
 - Don't forget to bring the proper adopter with you
 - There is no chance to buy one in Tsukuba
- Mobile phones
 - Radio bands may be different from other countries
 - If you want LTE(4G) speed, you need to pay attention
 - SIM free iPhones will work with prepaid SIM sold at the airports in Japan
 - Check your phone at <https://www.frequencycheck.com/>





Organizations



- Tomoaki Nakamura leads the local organizer team for HEPiX
 - 5 staffs are assigned
- We hired a conference management company
 - They do almost all for us
 - They work for HUF at the same time
 - You will receive e-mails also from the company Quality-Management Inc. after the registration



Further information



- Please regularly check our web page
 - <http://hepix-fall-2017.kek.jp/>
 - To be prepared soon....
- Restaurants [guide](#) around the Tsukuba station
 - “Shu” is the best sushi bar in this area
 - Reservation is necessary
 - Seats on the counter are recommended
 - » Small size parties only, 2-3 people
 - They take credit cards
 - If you are brave enough, say “Omakase”. You pay as requested, but the best foods and sake will be offered.
- Shop [guide](#) around the Tsukuba station
- [A day trips from Tsukuba](#)
- [Otaku](#) (sub-culture)



- Let us know if you have any concern on the registration, travel arrangements or anything
 - Contact Takashi.Sasaki@kek.jp and Tomoaki.Nakamura@kek.jp.



See you at Tsukuba!

HEPIX Fall 2017

October 16-20, 2017

<http://hepix-fall-2017.kek.jp/>

LOC Chair: Toamooki.Nakamura@kek.jp

